

The Castle School World of Work Newsletter



Term: Christmas 2023

Edition Number: 38

We would like to wish a very **Happy Christmas** to everyone, and say thank you, as always, to the many businesses and individuals who support the World of Work programme. This has been an exciting term, with an ever growing number of work placements and some great new contacts made with organisations we have not worked with before. A fantastic recent highlight was running a "Castle Christmas Crafts" pop-up stall at Newbury Market, to promote our in-school enterprise projects. We hope you have a great Christmas and New Year, and look forward to working with many of you, and exploring new opportunities in 2024.

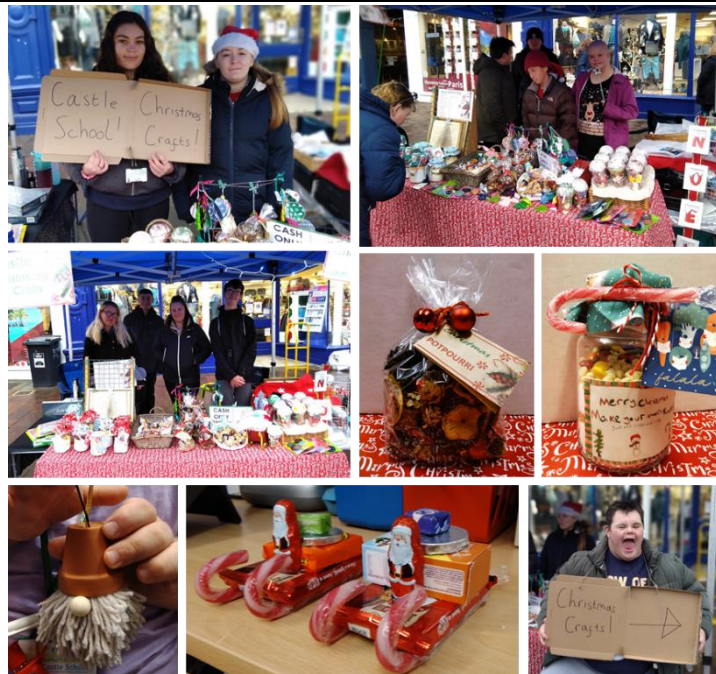
We are delighted to be working with John Rankin School for the first time this term. Our student, Sean, is keen to gain experience in an administration environment, as this is an area he would like to pursue in the future. John Rankin have created an opportunity for him in the school office, where he works closely with the team on a variety of tasks. So far he has been involved in recording and distributing resource deliveries, logging information online, working on an equipment database, and general office tasks such as filing, copying and scanning. The team have given Sean a very warm welcome and he is really enjoying the placement.



World of Work has been working in partnership with local arts charity, City Arts, for some time. This term our student, Zack, has been working in the City Arts café. The team are very welcoming and have involved Zack in all aspects of the work, such as cleaning and clearing tables, taking food and drinks to customers, taking orders at the till and setting up the signage at the start of the day. Zack has also had the opportunity to take part in one of the art workshops, and enjoyed interacting with the team and with members of the public. Zack is learning lots and really growing in confidence.



It is great to be back at Shaw House again this term, having previously worked with them a couple of years ago. Amy has had a number of work placements, both in retail and in office environments, and she has decided that office / administration work is an area she is really interested in following up when she leaves school. At Shaw House she has been assisting in a number of different areas, working alongside the site team. She has helped to prepare conference and training rooms, assisted with setting up the café, and has been learning about the variety of administrative tasks necessary on a daily basis, to keep Shaw House running. This is giving Amy great further insight into this type of work, and is helping her to make decisions about her future.



This term, Newbury Town Council offered us a fantastic opportunity to run a “pop-up” stall in Newbury market. This was a great platform for us to showcase some of the talents of our students, selling Christmas crafts and goods created at school. All the classes at Post-16 were involved in creating items to sell, from cookie-mix jars to potpourri, to Christmas decorations and sweets. Our students took turns to man the stall and practise their customer service skills, including handling money and wrapping up peoples' purchases. Despite the weather, we had a brilliant day, with a constant stream of customers and we sold out of nearly everything. The students really enjoyed the experience and took huge pride in taking part.

As part of our ongoing relationship with Waitrose, we have the opportunity to place a different student in work experience every few weeks. This is a fantastic opportunity for a first venture into the workplace, as the students are in a supportive environment, working one-to-one with a member of the Waitrose team. The term it has been Franklin's turn, and he has worked well and made lots of progress. At the start, he was a little shy and was unsure what would be involved, but over the weeks he has got to know Chris (Waitrose partner), and learnt how to stack and arrange products on the shelves and to listen well and focus on the task. He was very proud himself and of what he achieved at work experience.





base
british association for
supported employment

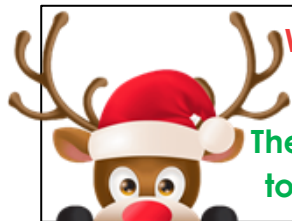


In November, the World of Work team attended the annual BASE (British Association for Supported Employment) conference in Leicester. BASE's purpose is to promote and develop the principles and provision of supported employment, for people with a disability or other disadvantage. The conference provides a great opportunity for networking with supported employment practitioners, sharing best-practice and ideas, and learning about new developments. We also heard some very inspiring stories from those on the receiving end of supported employment services. <https://www.base-uk.org/home>

This term we have been collaborating with West Berkshire Training Consortium to provide our students with information about apprenticeships and educational programmes available to them, after they leave school. WBTC are a training provider, and work with young people and businesses across the region to provide training and apprenticeship opportunities. They have great expertise in the area, and are an important additional resource for our students in terms of accessing work and ongoing training.



World of Work – Recent Participants & Supporters



We would like to say a huge "Thank You" to everyone who is, or has been, involved with the World of Work programme

The Castle School will be closed for Christmas from Wednesday 20th December to Tuesday 9th January. We look forward to working with many of you in 2024.

We are continually looking for new organisations to participate in our World of Work Programme through educational visits, virtual / face-to-face meetings, guest speakers and work experience opportunities.

We would love to hear from you, if you would like to get involved with the World of Work programme. Please don't hesitate to get in touch if you would like to find out more or if you have any questions:

Louisa McClure – World of Work Manager – lmcclore@castle.w-berks.sch.uk Telephone: 07990 584536

Nicola Hall – Employer Engagement Officer – nhall@castle.w-berks.sch.uk Telephone: 07747 631392